

PROJECT PROFILE



Resource Industrial Group is proud to have been invited by the Seaton Group to be part of the rehabilitation of the historic Alton Mill in the Caledon Hills 45 minutes outside of Toronto. The Seaton Group set out to rehabilitate the mill into an arts and heritage center with a mix of art studios, offices, retail, event space, cafe and an industrial heritage exhibit. Contracted by JD Strachan Construction, RIG designed, engineered, fabricated, galvanized and installed numerous structures to bring the facility up to today's building codes and standards, as well as help transform the mill into a beautiful and inspiring place to work, shop and visit. On the outside, a waterfall viewing platform, second floor fire escape, and roof canopy structure were built and installed. The waterfall viewing platform

courtyard, dam, and riverside path. The fire escape at the front of the building was of both aesthetic and functional importance. The design consisted of a support superstructure from which the platform and spiralling stair was hung. On the west end of the building a 6'x 40' canopy was added to the building addition. On the inside there were beautiful original timber stairways that required railings and barriers. Multiple new staircases and railings were also added to other interior spaces. Throughout the project there was an architectural railing panel incorporated into all stair, landing and platform railings. We look forward to working with The Seaton Group, JD Strachan and the rest of the project team again in the near future.

CUSTOMER

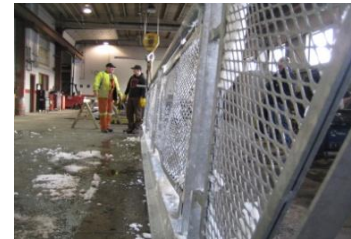
JD Strachan Construction Ltd.

PROJECT

Alton Mill Historical Restoration

LOCATION

Alton, Caledon Hills, Ontario



Resource Industrial Group Inc. / 1-888-776-6637 / www.resourceindustrial.com



Resource Industrial Group.